



**TOWARDS A SUSTAINABLE WORLD**

# **intercare chemicals**

The solution to your cleaning needs.

Trusted private label manufacturer of  
cleaning and hygiene products

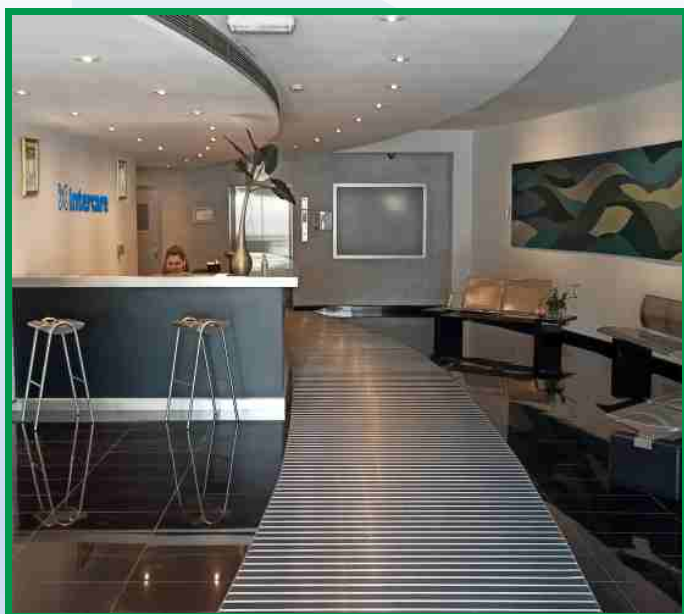


# WELCOME TO INTERCARE LIMITED



## Towards A Sustainable World

Established in **1969**, Intercare Limited was founded in the Levant with a vision to meet the evolving demands of the **Washroom Hygiene, Floorcare, and Powder Coating** sectors. Kicking off its journey in the early 1970s, the enterprise shaped its core businesses in line with the nation's rapid infrastructure development following the founding of the **UAE**. Since then, Intercare has expanded exponentially over the past 50 years to become one of the GCC market's sought-after manufacturers and suppliers of innovative and sustainable solutions for **Washroom Hygiene, Floorcare, Speciality Chemicals, Waste Care, Building Materials, Interiors, Powder Coating, and Steel & Fencing Sectors**.



## Intercare Chemicals L.L.C.

The **ISO 9001 – 2015** and **ISO GMP 22716 – 2007** certificated factory has a total production capacity of **14,000 metric tons/year** and employs highly qualified office staff and skilled and trained shop floor work staff.

We also provide:

- 1. Contract Manufacturing**
- 2. Private Label Manufacturing**
  - **Fabric Care** (Fabric Softener Regular, Fabric Softener Concentrate, Antibacterial Fabric Softener, Liquid Detergent, Kandora Liquid Detergent, Abaya Liquid Detergent)
  - **Hand Hygiene** (Liquid Hand Soap)
  - **Home Care** (Window Cleaner, Solid Drain Opener, Liquid Drain Opener, Bleach, Toilet Bowl Cleaner, Antiseptic Disinfectant)

## FROM THE CHAIRMAN'S DESK

“ As the proud founding member of **Intercare Limited**, one of the pioneering companies in institutional cleaning and sanitation products and services with an illustrious track record, I can proudly say that we have developed an organizational culture that's underpinned by a commitment to delivering sustainable methods and a safer environment. Established in **1969** in the Levant region, over the last half a century, Intercare has expanded into the GCC countries, Egypt and Morocco, with a portfolio of its own brands and major global brands of **hygiene, Floor Care, and Waste Care** products and solutions.



At Intercare, our aim is to achieve and maintain leadership in our business by manufacturing and providing products and services that create economically viable communities. The company is committed to accomplishing this by aligning commercial success with environmental and social responsibility.

Looking forward, we strive to continue improving our products, services, and efficiency in terms of technology and processes. Currently, all our efforts are focused on developing a new-generation range of products, and efficient manufacturing capabilities that facilitate high-quality production and cost-effectiveness.

As a responsible corporate citizen, Intercare ensures that highly skilled, high-caliber professionals manage the functioning of the organization, while dedicated and thoroughly trained staff undertakes the services provided to the end-users. The corporate infrastructure has evolved to flawlessly look after the interests of all the stakeholders at Intercare and I am greatly indebted to our CEO, Management Colleagues, Group members, Employees, Customers, and Suppliers, for their commitment and support which enables us to deliver undoubtedly the best in the industry.

**Mr. JOHN H COLLEY**  
Chairman



# AIR FRESHENER



## 90ML



Scent: Potpourri  
Scent Family: Floral  
System: Spray  
Code: WHICCH00122

Fragrance Intensity  
★★★★  
**ASTONISH**



Scent: lavender  
Scent Family: Floral  
System: Spray  
Code: WHICCH00077

Fragrance Intensity  
★★★★  
**ENCHANT**



Scent: Lemongrass  
Scent Family: Citrus  
System: Spray  
Code: WHICCH00126

Fragrance Intensity  
★★★★  
**VERVEINE**



Scent: Oud  
Scent Family: Oud  
System: Spray  
Code: WHICCH00125

Fragrance Intensity  
★★★★  
**EXOTIC**



Scent: Vanilla  
Scent Family: Clean  
System: Spray  
Code: WHICCH00075

Fragrance Intensity  
★★★★  
**VANILLA**



Scent: Green Bamboo  
Scent Family: Tropical  
System: Spray  
Code: WHICCH00076

Fragrance Intensity  
★★★★  
**MARVEL**



Scent: lemon  
Scent Family: Citrus  
System: Spray  
Code: WHICCH00072

Fragrance Intensity  
★★★★  
**LEMON ZEST**



Scent: Flowery Notes  
Scent Family: Floral  
System: Spray  
Code: WHICCH00073

Fragrance Intensity  
★★★★  
**PASSION**



Scent: Mix Fruits and Flowers  
Scent Family: Fruity and Floral  
System: Spray  
Code: WHICCH00123

Fragrance Intensity  
★★★★  
**SPLendid**

## 270ML



Scent: Fruity  
Scent Family: Fruity  
System: Spray  
Code: WHICCH00129

Fragrance Intensity  
★★★★  
**MOTIVATION**



Scent: Blended  
Scent Family: Blended  
System: Spray  
Code: WHICCH00130

Fragrance Intensity  
★★★★  
**PROHIBITION**



Scent: Soft Cotton  
Scent Family: Clean  
System: Spray  
Code: WHICCH00062

Fragrance Intensity  
★★★★  
**FRESH**



Scent: Green Bamboo  
Scent Family: Tropical  
System: Spray  
Code: WHICCH00063

Fragrance Intensity  
★★★★  
**MARVEL**



Scent: Mango  
Scent Family: Fruity  
System: Spray  
Code: WHICCH00029

Fragrance Intensity  
★★★★  
**MANGO**



Scent: lavender  
Scent Family: Floral  
System: Spray  
Code: WHICCH00035

Fragrance Intensity  
★★★★  
**ENCHANT**



Scent: Sparkling Citrus  
Scent Family: Citrus  
System: Spray  
Code: WHICCH00061

Fragrance Intensity  
★★★★  
**Wonder**



Scent: Oud  
Scent Family: Oud  
System: Spray  
Code: WHICCH00036

Fragrance Intensity  
★★★★  
**EXOTIC**



Scent: Lemon  
Scent Family: Citrus  
System: Spray  
Code: WHICCH00028

Fragrance Intensity  
★★★★  
**LEMON ZEST**



Scent: Peach & Apricot  
Scent Family: Fruity  
System: Spray  
Code: WHICCH00030

Fragrance Intensity  
★★★★  
**PEACH & APRICOT**



Scent: Potpourri  
Scent Family: Floral  
System: Spray  
Code: WHICCH00032

Fragrance Intensity  
★★★★  
**ASTONISH**



Scent: Flowers  
Scent Family: Clean  
System: Spray  
Code: WHICCH00056

Fragrance Intensity  
★★★★  
**ALERT**



Scent: Vanilla  
Scent Family: Clean  
System: Spray  
Code: WHICCH00027

Fragrance Intensity  
★★★★  
**VANILLA**



Scent: Apple  
Scent Family: Fruity  
System: Spray  
Code: WHICCH00064

Fragrance Intensity  
★★★★  
**APPLE FRESH**



Scent: Lemongrass  
Scent Family: Citrus  
System: Spray  
Code: WHICCH00108

Fragrance Intensity  
★★★★  
**VERVEINE**



Scent: Passion Fruit  
Scent Family: Fruity  
System: Spray  
Code: WHICCH00034

Fragrance Intensity  
★★★★  
**SURPRISE**



Scent: Jasmine  
Scent Family: Floral  
System: Spray  
Code: WHICCH00033

Fragrance Intensity  
★★★★  
**STARTLE**



Scent: Mix Fruits & Flowers  
Scent Family: Fruity & Floral  
System: Spray  
Code: WHICCH00114

Fragrance Intensity  
★★★★  
**SPLendid**



Scent: Flowery Notes  
Scent Family: Floral  
System: Spray  
Code: WHICCH00060

Fragrance Intensity  
★★★★  
**PASSION**



Scent: Blended  
Scent Family: Blended  
System: Spray  
Code: WHICCH00131

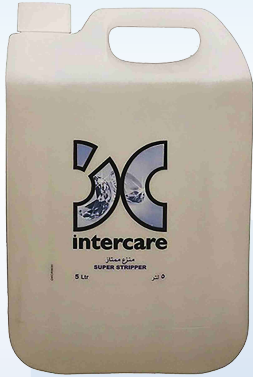
Fragrance Intensity  
★★★★  
**CHRISTI CHRISTI**



# FLOORCARE



5Ltr.



### SUPER STRIPPER

Highly powered stripper which can remove all types of wax & floor polish coatings from floors.  
Packing: 5 Ltr.  
Code: FCICCH00047



### ACRYLIC FLOOR POLISH

A high solids, metalized dry bright floor polish with long lasting deep shine. (16% solids)  
Packing: 5 Ltr.  
Code: FCICCH00092



### ACRYLIC FLOOR POLISH-GLAZE

High solids, metalized dry bright floor polish with long lasting deep shine. (24% solids)  
Packing: 5 Ltr.  
Code: FCICCH00095



### CARE SPRAY BUFF

A scented spray emulsion, formulated for use with high speed buffing machines.  
Packing: 5 Ltr.  
Code: FCICCH00127

# DETERGENTS

1 & 5 Ltr.



### ALL PURPOSE DETERGENT

A neutral all purpose detergent ideal for every washable surfaces.  
Packing: 1 & 5 Ltr.  
Code: FCICCH00020 / FCICCH00021



### LOW FOAM DETERGENT

Low Foam floor cleaner for scrubber dryers & single disc machines.  
Packing: 5 Ltr.  
Code: FCICCH00128



### SANICARE

Highly perfumed detergent for water resistant hard surfaces.  
Packing: 5 Ltr.  
Code: FCICCH00133



### CARPET DETERGENT

A low foam, spray extraction carpet cleaner. Perfumed & designed for cleaning with spray extraction machines.  
Packing: 5 Ltr.  
Code: FCICCH00101



### CARPET SHAMPOO

A concentrated high foam shampoo. Ideal for cleaning all carpets & upholstery and for use in shampooing machines.  
Packing: 1 & 5 Ltr.  
Code: FCICCH00097 / FCICCH00010



### RESTORE STAIN REMOVER

A dry foam carpet shampoo containing spot & stain removing agents. Ideal for carpet shampooing machines.  
Packing: 5 Ltr.  
Code: FCICCH00103



# DISINFECTANTS

500 ML, 1 & 5 Ltr.



### INTERPINE

Excellent general purpose disinfectant which cleans, deodorizes & disinfects kitchen, drains, toilets & public utility areas.  
Packing: 1 & 5 Ltr.  
Code: FCICCH00090 / FCICCH00089



### ANTISEPTIC DISINFECTANT

A non poisonous & non staining germicide, ideal for personal hygiene, floors and bathrooms.  
Packing: 500 ml & 5 Ltr.  
Code: CHFCDI00040 / FCICCH00052



### PHENOLIC DISINFECTANT

High grade disinfectant based on chloro phenols. Ideal for general cleaning & disinfection of drains, sinks & toilets.  
Packing: 5 Ltr.  
Code: FCICCH00084



### STERICARE (SURFACE DISINFECTANT/STERILIZER)

Stericare is a multi-purpose disinfection solution used for eliminating bacteria, viruses, and viral spores.  
Packing: 5 Ltr.  
Code: FCICCH00111

# INDUSTRIAL / INSTITUTIONAL

300 ML & 5 Ltr.



### CEMENT SCALE REMOVER

Highly effective, concrete and masonry cleaner. It is a mineral acid-based concentrated preparation with a pungent smell.  
Packing: 5 Ltr.  
Code: FCICCH00089



### DEGREASER

Mild foam heavy-duty alkaline cleaner mainly for hard surface cleaning to remove the tuff stain of Oil or grease deposits.  
Packing: 5 Ltr.  
Code: FCICCH00031



### DEGREASER HD

Heavy-duty alkaline cleaner for hard surface cleaning including grease and oil. It is a clear colorless liquid that has an appreciable odor.  
Packing: 5 Ltr.  
Code: FCICCA00152



### CAR SHAMPOO

Highly concentrated neutral detergent ideal for both manual & automatic car wash. It is a viscous, clear, green color, high foaming liquid with a pleasant refreshing odor.  
Packing: 5 Ltr. - Code: FCICCH00010



### KITCHEN OVEN & GRILL CLEANER

It removes baked-on grease and carbon deposits from stainless steel frying pans, range hoods, grills, ovens, and other kitchen equipment.  
Packing: 5 Ltr.  
Code: CHFCCF00029



### SANI CLEAN DRIP SYSTEM

An effective, highly perfumed urinal Cleaner & Deodorizer specially formulated with disinfectant and nonionic surfactant.  
Packing: 300 ml  
Code: CHFCS00135



# HAND WASH & SANITIZERS



60, 300, 800 ML, 1 & 5 Ltr.



## RED FRUIT BURST

Red Fruit Liquid Hand Soap gently cleanses hands and leaves a pleasant long-lasting perfume.  
Packing: 300 ml  
Code: CHFSC00128



## LAVENDER

Lavender Hand Wash gently cleanses hands and leaves a pleasant long-lasting perfume.  
Packing: 300 ml  
Code: CHFSC00130



## MILDA CLEAR

Milda Clear Liquid Hand Soap gently cleanses hands and leaves you feeling refreshed with a pleasant long-lasting fragrance.  
Packing: 5 Ltr.  
Code: WHICCH00081



## WHITE PEARL

White Pearl Hand Soap is pearlized, perfumed hand soap. It is a medium viscosity, opaque white liquid with a lavender odor.  
Packing: 1 & 5 Ltr.  
Code: WHICCH00004/WHICCH00007



## SEA SPA

Sea Spa Liquid Hand Soap is a rich lathering liquid hand soap with moisturizers and fresh natural fragrance.  
Packing: 300 ml & 5 Ltr.  
Code: CHFSC00129/WHICCH00042



## ANTIBACTERIAL

Antibacterial liquid hand soap is a pearlized medicated cream hand soap. It is a viscous yellow liquid with a chloroxylenol – odor.  
Packing: 1 & 5 Ltr.  
Code: FCICCH00071 / FCICCH00072



## PINK PEARL

Pink Pearl Liquid Hand Soap is pearlized, perfumed hand soap. It is a medium viscosity, opaque pink liquid with a floral odor.  
Packing: 1 & 5 Ltr.  
Code: WHICCH00009/WHICCH00005



## FRESH FOAM

Suitable for high traffic areas with high hygiene standards, such as medical facilities, public washrooms and food preparation areas.  
Packing: 5 Ltr.  
Code: CHFSC00139



## HEAVY DUTY

Heavy Duty Liquid Hand Soap is a pleasantly perfumed hand cleaning soap specially formulated to remove heavy soilage from hands.  
Packing: 5 Ltr.  
Code: FCICCH00074



## NEUTRAL - SANITIZER

Hand Sanitizer Neutral is effective at caring hands and eliminating most of the common germs and bacteria.  
Packing: 5 Ltr.  
Code: WHICCH00145



## CITRUS - SANITIZER

Citrus - Hand Sanitizer is effective at caring for hands and eliminating most of the common germs and bacteria.  
Packing: 5 Ltr.  
Code: WHICCH00144



## LAVENDER - SANITIZER

Waterless hand sanitizer gel that kills germs instantly without water (rinse-free) and leaves a fresh scent.  
Packing: 60, 300, 800 ml, 1 & 5 Ltr.  
Code: FCICCH00076



# BODY CARE (SHOWER GEL, SHAMPOO & CONDITIONER)

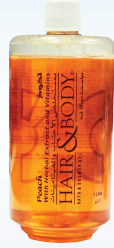


**300 ml, 1 & 5 Ltr.**



**BALSAM - CONDITIONER**

Code: WHICCH00017



**PEACH - SHOWER GEL**

Code: WHICCH00015



**SEA SPA BATH & SHOWER GEL**

Clear light green colored liquid cleaning shower with a fresh natural fragrance.

Packing: 300 ml & 5 Ltr.  
Code: WHICCH00044



**SEA SPA SHAMPOO**

Sea Spa Shampoo is fortified with protein Keratin and is mild, nonallergic, & safe for children as well.

Packing: 300 ml & 5 Ltr.  
Code: WHICCH00001/WHICCH00041



**APPLE - HAIR & BODY SHAMPOO**

Clear liquid cleaning shampoo, made of the perfect blend of green apple extract and essential minerals and proteins.

Packing: 1 & 5 Ltr.  
Code: WHICCH00012/WHICCH00013



# MULTIFLEX (HAND SOAP & SANITIZERS)

**1 Ltr.**



Compatible with  
Multiflex Dispensers



**WHITE PEARL - SOAP**

Code: WHICCH00066



**PINK PEARL - SOAP**

Code: WHICCH00071



**MULTI FOAM - SOAP**

Code: WHICCH00065



**ANTIBACTERIAL - SOAP**

Code: WHICCH00069



**ANTI-BAC FOAM - SOAP**

Code: WHICCH00115



**LIGHT CITRUS - SANITIZER**

Code: WHICCH00082



**ALCO-GEL - SANITIZER**

Code: WHICCH00068



**SANIFOAM - SANITIZER**

Code: WHICCH00070



# HOME & LAUNDRY CARE



500, 650, 950 ml, 1, 3.78 & 5 Ltr.



**DISHWASH LIQUID**

Code: FCICCH00017



**DISHWASH - CONCENTRATED**

Code: FCICCH00054 / FCICCH00056



**LIQUID DETERGENT**

Code: CHFCHK00135



**TOILET BOWL CLEANER**

Code: FCICCH00058 / FCICCH00058



**SOLID & LIQUID DRAIN OPENER**

Code: FCICCH00132 / FCICCH00131



**FABRIC SOFTENER  
(LAVENDER, WHITE & BLUE)**

Code: FCICCH00148



**LIQUID BLEACH**

Code: FCICCH00082 / FCICCH00081



**WINDOW CLEANER**

Code: FCICCH00110

## HEAD OFFICE & SHOWROOM:

Intercare Building, Industrial Area 15,  
Sharjah, UAE. | P.O Box: 5628  
☎ +971 6 519 4777 | ✉ info@intercare-ltd.com

## REGIONAL OFFICE:

### Dubai Office:

Tel.: +971 42859091  
P.O.Box 10886  
Dubai, UAE

### Abu Dhabi Office:

Tel.: +971 25592022  
P.O.Box 28589  
Abu Dhabi, UAE



SHOP ONLINE

@intercareltd

[www.intercare-ltd.com](http://www.intercare-ltd.com)

[www.intercare-homedelivery.ae](http://www.intercare-homedelivery.ae)

